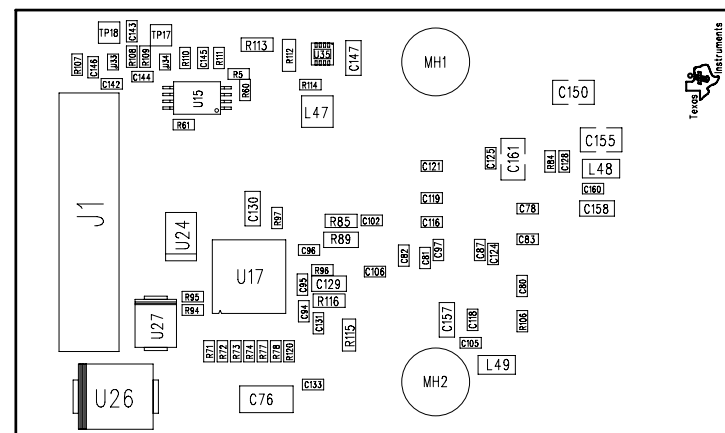


Notes:

- 1) Refer to BOM for stuffing options.
- 2) Observe polarity on diodes and capacitors.

REVISIONS				
	REV.	DESCRIPTION	DATE	APPROVED



Primary Side

APPLICATION		CONTRACT NO.	DWN: www.WSTScorp.com	9/14	TEXAS INSTRUMENTS									
USED ON	NEXT ASSY.		CHK:											
		UNLESS OTHERWISE SPECIFIED 1. TOLERANCES: LINEAR = : 0.26 (.010) ANGULAR = : 0.50 ° 2. ALL DIMENSIONS ARE IN MM (INCHES). 3. INTERPRET DRAWING IN ACCORDANCE WITH DOD-STD-100.	P.E.:		TITLE: ASSEMBLY DRAWING, T1DM-SOMPLC-FCC									
			DES.ENG.:											
			P.C.:											
			Q.C.:											
			C.M.:											
			REL:											
			MFG:											
			ENG.MGR:							SIZE	CAGE CODE NO.	DRAWING NO.		REV:
MATERIAL: SEE NOTE FINISH: SEE NOTE			OTHER:							C				3
DO NOT SCALE DRAWING			OTHER:							SCALE: 1:1				